



# Crete Collectibles

## 2<sup>nd</sup> Edition - December 2024

This edition highlights our best-selling products, showcasing the perfect blend of exquisite & pragmatic. Discover our customer favorites and find inspiration for your home.





The monolithic black concrete sofa exudes brutalist charm and industrial elegance, softened geometry that reflects subtle textured variations. Its sharp geometric lines, softened by rounded corners and organic micro-pores, balance boldness with warmth.

## Monolith Sofa



Project for: **Ar. Deepak Gugarii,**  
**Studio VDGA, Pune**

Size: 1360 x 645 x 645mm

[www.cretekala.com](http://www.cretekala.com)





## Korin Bathtub

Size: D 1190 x H 920 mm

A sleek, Japanese-inspired soaking tub blending modern elegance with ultimate comfort. Designed a mini spa, perfect for your ice plunges.

Launched at



[www.cretekala.com](http://www.cretekala.com)



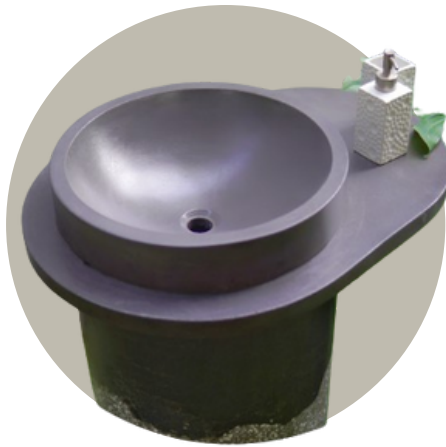
## Eclipse



## Florence



## Helix



## Pedestal Sink

Transform your space with the timeless beauty of our handcrafted concrete pedestal sinks, designed to blend luxury with functionality. Handcrafted with precision, our sinks come in a stunning variety of colors and patterns, offering elegance and durability like no other. Perfectly designed to complement any interior style, each sink is a unique masterpiece.





# Zen Sink

Project for: **FADD Studio, Bangalore**

Size : D 430 x H 870 mm





Ocean  
Bathtub

Project for: **Ar. Gowri Adappa**  
Size: D 1520 x H 650 mm





A sculptural masterpiece, this circular concrete bathtub in muted grey invites relaxation with its flowing, bowl-like form. Its smooth, organic contours cradle the body in serenity, while the cool, matte surface evokes a sense of understated luxury. The grey hue whispers timeless elegance, transforming the bathroom into a tranquil, earthy retreat.







## The Wave

Centre Table

This concrete centre table layered with sinuous patterns, reminiscent of a wave. Beige, white, and soft hues interweaving organically across its surface, creating a organic, nature-inspired centerpiece.

Project for: **Asijit Khan Architects, Kolkata**  
Size: D 610 x H 230 mm





## Dining Table Top



Project for: **Asijit Khan Architects**

Size: 1200 x 750 mm

A rectangular dining table made from smooth grey concrete, featuring a clean, minimalist design. Its durable structure and modern look makes it a striking yet functional addition to any contemporary dining space.





# Floral Seating

Size: 1800 D x 450 H mm

This poised planter consists of a radial wooden seating arrangement with a central landscaped niche, suitable for all weather conditions. This design is a perfect blend of function and greenscape making it an ideal choice to create tranquil atmosphere in your space.



Project for: **Red Architects, Mumbai**  
Size: 2200 x 610 x 200 mm



This vibrant wall-mounted basin with an integrated sink, drain board, and extra countertop space for added functionality. Designed to blend style and utility, this basin is finished in a striking orange hue, perfectly complemented by its matching coupling for a cohesive look





# Yin Yang



A striking circular center table embodies the Yin-Yang symbol with intertwining black and grey concrete halves. The contrasting tones create a harmonious swirl pattern, while the polished surface adds sophistication to this sculptural conversation piece.



Size: 1200 D x 450 H mm





Project for: **Ravi Vazirani Design Studio, Mumbai**

Size: 1800 x 600 x 940 mm

## Outdoor Counter

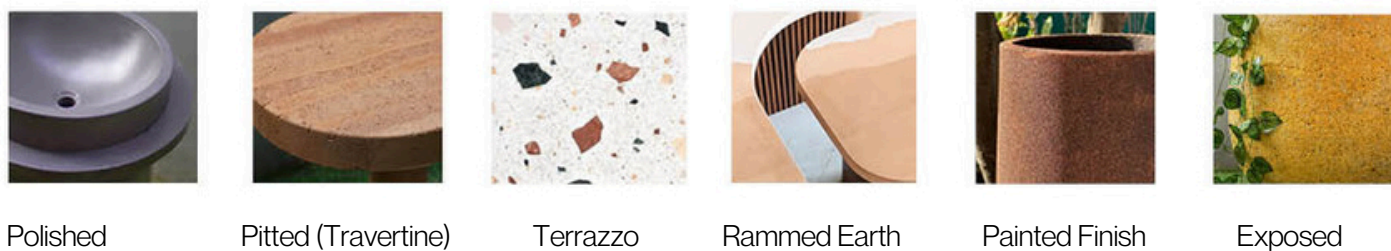
A kitchen counter made from concrete combines modern elegance with exceptional durability. Customizable in color, texture, and finish, it offers a sleek, seamless look. Ideal for adding a unique, artisanal touch to your outdoor party spaces.



# Crete Colours



## Finishes



## Accessories







# Thank You

Reach us at

**Contact:** +91 9607710111

**Email:** [director@cretekala.com](mailto:director@cretekala.com)

[www.cretekala.com](http://www.cretekala.com)